

SYS45 RAPID



SYS45 RAPID



Sistema di canali per il cliccaggio rapido dei frutti mm 45x45 (tipo mosaic™).

Materiale: PVC Rigido Autoestinguente Classe 1 (UL94-V0).
Lunghezza: 2 metri
Colore Bianco tipo 9010
I canali vengono forniti completi di coperchio.

Raceways system for direct click and fix of socket points mm 45x45 (mosaic™ type).

Self-extinguishing rigid PVC Class 1 (UL94-V0).
Length: 2 meters
Colour: White type 9010
All trunkings come complete with cover.

Système de goulottes pour le clipsage des mécanismes mm 45x45 (type mosaic™).

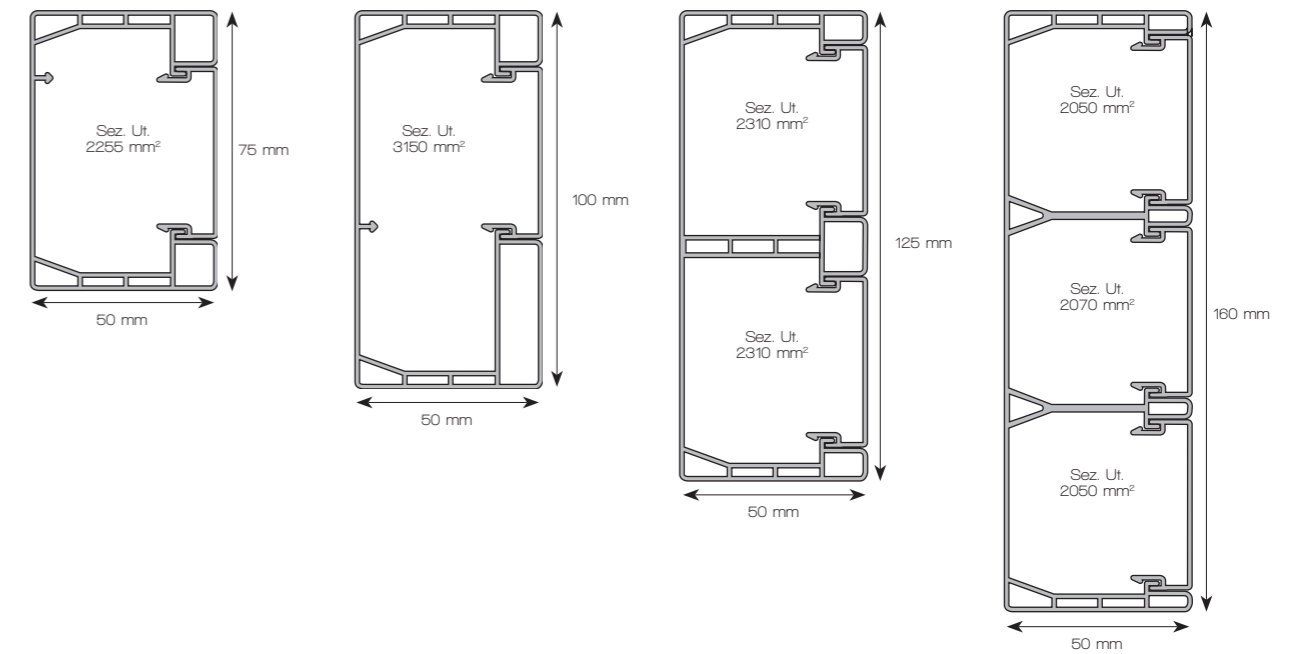
Matériel: PVC rigide auto-extinguible classe 1 (UL94-V0).
Long: 2 m.
Couleur: Blanc type 9010
Les goulottes sont livrées complètes de couvercles.



Guide Rails Guides	Sezione fondo Section of the bottom Section base	Codice Code	Dimensioni BxH mm Duct Size BxH mm Dimensions BxH mm	Imballo m Standard Carton m Emballage m	S.G. mm ² G.S. mm ² S.R. mm ²	Lung. barre m Length m Longueur m	Cartone peso Kg Carton Weight Kg Poids carton kg
--------------------------	--	----------------	--	---	--	---	--

▲		SYS751	75x50x1	24	2255	2	23,10
▲		* SYS1051	100x50x1	16	3150	2	18,2
		SYS1252	125x50x2	16	4260	2	23,7
		SYS1603	160x50x3	12	6170	2	24,4

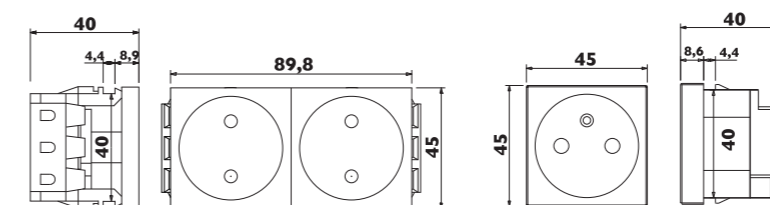
▲ Canali con guide sul fondo. / Trunkings with rails on the bottom. * No IMQ



Dimensioni degli apparecchi modulo 45 con sistema di aggancio tipo MOSAIC™.

Dimensions of module 45 sockets having MOSAIC™ type clamping system.

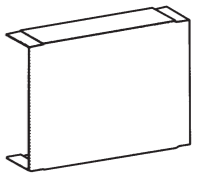
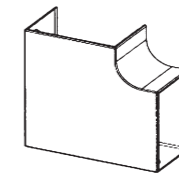
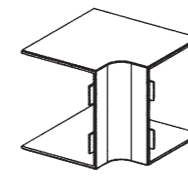
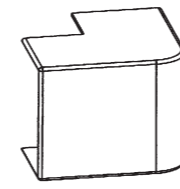
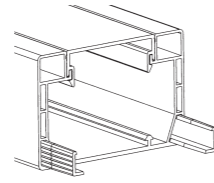
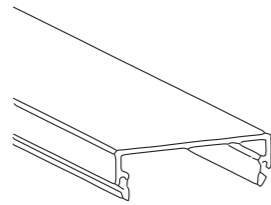
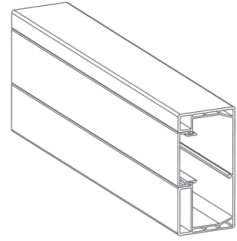
Dimensions des prises module 45 avec système d'encliquetage type MOSAIC™.



SYS45 RAPID



SYS45 RAPID



SCO45

SGAC

SGCO

LD E

LD I

LD L

LD T

Conforme alle norme NF C 68 102 - IP4X - GWT 850°C
Conforming to standards NF C 68 102 - IP4X - GWT 850°C
Conforme aux normes NF C 68 102 - IP4X - GWT 850°C

Coperchio mm. 45
Cover mm. 45
Couvercle mm 45

Giunto allineamento canale
Trunking joint
Joint de fond

Coprighunzione coperchio
Cover joint
Joint de Couvercle

Angolo esterno
Outside angle
Angle Extérieur

Angolo interno
Inside angle
Angle Intérieur

Angolo piano
Flat angle
Angle Plat

Giunto a "T"
T-joint
Tê de Derivation

Guide Rails Guides	Codice Code	BxH mm BxH mm BxH mm
▲	SYS 751	75x50x1
▲	* SYS 1051	100x50x1
	SYS 1252	125x50x2
	SYS 1603	160x50x3

Codice Code	Imballo m Packing m Emballage m
SCO45	64

Codice Code	Imballo pz. Packing pcs Emballage pcs
SGACBEU	50 (5x10)

Codice Code	Imballo pz. Packing pcs Emballage pcs.
SGCOBEU	20

Codice Code	Imballo pz. Packing pcs Emballage pcs.
LD075EBEU	16
LD105EBEU	15
LD125EBEU	10
SAE160BEU	4

Codice Code	Imballo pz. Packing pcs Emballage pcs.
LD075IBEU	16
LD0105IBEU	15
LD125IBEU	10
SAI160BEU	10

Codice Code	Imballo pz. Packing pcs Emballage pcs.
LD075LBEU	20
LD105LBEU	10
LD125LBEU	8
SAP160BEU	8

Codice Code	Imballo pz. Packing pcs Emballage pcs.
LD075TBEU	12
LD105TBEU	15
LD125TBEU	10
* SGT160BEU	10

▲	SYS 751	75x50x1
▲	* SYS 1051	100x50x1
	SYS 1252	125x50x2
	SYS 1603	160x50x3

SCO45	64
-------	----

SGACBEU	50 (5x10)
---------	-----------

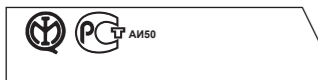
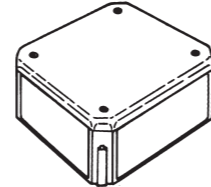
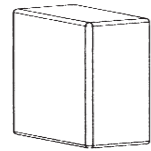
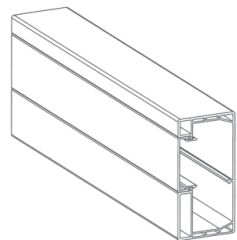
SGCOBEU	20
---------	----

LD075EBEU	16
LD105EBEU	15
LD125EBEU	10
SAE160BEU	4

LD075IBEU	16
LD0105IBEU	15
LD125IBEU	10
SAI160BEU	10

LD075LBEU	20
LD105LBEU	10
LD125LBEU	8
SAP160BEU	8

LD075TBEU	12
LD105TBEU	15
LD125TBEU	10
* SGT160BEU	10



LD A

SADC

LDSD

SYML

Conforme alle norme NF C 68 102 - IP4X - GWT 850°C
Conforming to standards NF C 68 102 - IP4X - GWT 850°C
Conforme aux normes NF C 68 102 - IP4X - GWT 850°C

Tappo terminale
End cap
Embout

Adattatore per canale SYS1603
Adaptor for SYS 1603
Réducteur SYS 1603

Scatola di derivazione
Junction box for trunkings
Boîti de dérivation

Molletta inox per una maggior tenuta delle apparecchiature.
Stainless tongs for a better grip on sockets.
Pince inox pour une meilleure tenue des prises.

Guide Rails Guides	Codice Code	BxH mm BxH mm BxH mm
▲	SYS 751	75x50x1
▲	* SYS 1051	100x50x1
	SYS 1252	125x50x2
	SYS 1603	160x50x3

Codice Code	Imballo pz. Packing pcs Emballage pcs.
LD075ABEU	20
GT100ABEU	10
* STT125BEU	10
STT160BEU	10

Codice Code	Imballo pz. Packing pcs Emballage pcs.
SADCBEU	16

Codice Code	Imballo pz. Packing pcs Emballage pcs.
LDSDBEU	4

Codice Code	Imballo pz. Packing pcs Emballage pcs.
SYML	100

▲	SYS 751	75x50x1
▲	* SYS 1051	100x50x1
	SYS 1252	125x50x2
	SYS 1603	160x50x3

LD075ABEU	20
GT100ABEU	10
* STT125BEU	10
STT160BEU	10

SADCBEU	16
---------	----

LDSDBEU	4
---------	---

SYML	100
------	-----

INTERRUTTORI PRESE / SWITCHES - SOCKETS / INTERRUPTEUR - PRISE 45x45 mm

Descrizione Description Description	Codice Code Référence	Imballo pz. Pack pcs. Emb. pcs.
Prese Schuko +T, 16A, 250V Schuko +T, 16A, 250V Prise schuko + T, 16A, 250V	CP2800 <input type="checkbox"/>	30
Prese Schuko +T, 16A, 250V Schuko +T, 16A, 250V Prise schuko + T, 16A, 250V	CP2810 <input checked="" type="checkbox"/>	30
Prese Francese +T, 10A, 250V French socket +T, 10A, 250V Prise française + T, 10A, 250V	CP2811 <input type="checkbox"/>	30
Prese Inglese +T, 10A, 250V UK socket +T, 10A, 250V Prise anglaise + T, 10A, 250V	CP2812 <input type="checkbox"/>	30
Prese Francese +T, 10A, 250V French socket +T, 10A, 250V Prise française + T, 10A, 250V	CP2813 <input checked="" type="checkbox"/>	30
Prese Dati RJ45 Data socket RJ45 Prise données RJ45	CP2814 <input type="checkbox"/>	30
Prese Dati RJ45 doppia Data socket RJ45 double Prise données RJ45 double	CP2815 <input type="checkbox"/>	30

**Sys45Rapid: cliccaggio diretto degli apparecchi
applicazione a multiscoparti e un solo coperchio**

- Un sistema innovativo di concepire l'impianto elettrico nel terziario per le applicazioni a parete come portautenze: Sys45Rapid.
- Una serie di profili multiscoparti dedicati, per il fissaggio di tutti gli apparecchi modulo 45 con sistemi di aggancio tipo mosaic, consentendo la divisione dei circuiti non solo nelle dimensioni a più scomparti, ma anche nella misura più piccola che è predisposta per l'uso di un separatore.
- Le pareti presentano una particolare struttura di tipo alveolare; ciò conferisce ai canali una decisa robustezza ed una notevole indeformabilità a sostegno della stabilità di aggancio dei frutti.
- Il montaggio degli apparecchi non richiede alcun accessorio: un solo "clic" (movimento a pressione) permette il fissaggio diretto, alla struttura apposita del canale, di molteplici frutti affiancati ed alloggiati in scomparti diversi, predisposti a misura di apparecchio e già pronti per essere utilizzati.
- Il sistema si sviluppa su 4 dimensioni di canali ed 1 solo coperchio, per razionalizzare tutte le necessità dell'impianto: 75x50 monoscoparto (predisposto per 1 separatore); 100x50 monoscoparto (predisposto per 1 separatore); 125x50 doppio scomparto e doppio coperchio; 160x50 triplo scomparto e triplo coperchio.
- È integrabile con il nostro sistema Lineadin del quale condivide gli accessori sia nella versione normale Ldc che in quella Ldcab/Ldcob.
- Vengono forniti in barre da m 2, nel colore Bianco RAL 9010 ed in robuste scatole di cartone.
- I materiali usati sono classificati M1. Grado di Protezione: IP4X.
- Insomma.. un sistema dalle rifiniture particolarmente curate, con le pareti ed i coperchi rivestiti di pellicola protettiva, economico, snello (solo 4 canali), robusto, completo nella sua gamma di accessori e.....Rapido nel montaggio (cliccaggio).

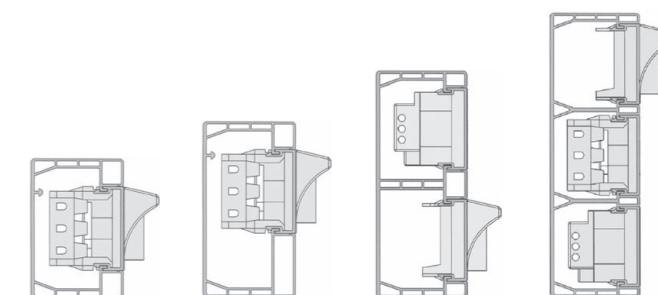
**Sys45Rapid: direct click and fix
Multi-compartment single cover application**

- A new system of devising the electric system in the service industry for socket point wall applications: Sys45Rapid
- A series of special multi-compartment sections for fixing all module 45 equipment with mosaic type hooks allow arranging the circuits not only in the multi-compartment versions, but also in the smaller size to be used with a separator.
- The walls have a special honeycomb-like structure for increasingly sturdy and non-deformable ducts ensuring the coupling stability of the connectors.
- Fixing the equipment requires no accessories: a single "click" (pressure) allows to fix multiple side-by-side connectors to the appropriate structure of the duct, seated in different compartments, fitted to the equipment size and ready for use.
- The system features four duct sizes and a single cover for increased efficiency: 75x50 single-compartment (suitable for 1 separator); 100x50 single-compartment (suitable for 1 separator); 125x50 double compartment and double cover; 160x50 triple compartment and triple cover
- It can be combined with our Lineadin system as it shares its accessories both in the standard Ldc version and in the Ldcab/Ldcob version.
- They are supplied in 2 m bars, in RAL 9010 White and in strong cardboard boxes.
- The materials used are classified as M1. Degree of Protection: IP4X.
- In short... a carefully finished system, with walls and covers lined with a protective film, inexpensive, slim (only 4 ducts), strong, complete with a range of accessories and ... Rapid to assemble (click 'n' fix).



**Sys45Rapid: clipsage direct des appareils application
multicompartiments avec un seul couvercle**

- Une manière novatrice de concevoir l'installation électrique, une solution à tous les besoins de distributions dans l'habitat et le tertiaire: Sys45Rapid.
- Une série de profils multicompartiments spéciaux, pour la fixation de tous les appareils module 45 avec système d'accrochage de type mosaic, permettent la division des circuits non seulement dans les modèles à plusieurs compartiments, mais aussi dans le modèle de plus petite dimension, qui peut être utilisé avec un séparateur.
- Les parois présentent une structure particulière de type alvéolaire; ceci confère aux moulures électriques une grande solidité et une remarquable indéformabilité, assurant ainsi une fixation très stable aux cadres pour prises.
- Le montage des appareils ne demande aucun accessoire: un seul "clic" (mouvement à pression) permet la fixation directe, sur la structure de la moulure conçue à cet effet, de nombreux cadres pour prises placés côte à côte et logés dans des compartiments différents, à la dimension de l'appareil et déjà prêts à être utilisés.
- Le système comprend 4 dimensions de moulures et un seul couvercle, a fin de couvrir tous les besoins de l'installation: 75x50 monocompartiment (prédisposé pour 1 séparateur); 100x50 monocompartiment (prédisposé pour 1 séparateur); 125x50 double compartiment et double couvercle; 160x50 triple compartiment et triple couvercle.
- Il peut être intégré avec notre système Lineadin avec lequel il partage les accessoires tant dans la version normale Ldc que dans la version Ldcab/Ldcob.
- Sont fournis en barres de 2 m, dans la couleur Blanc RAL 9010 et sont emballés dans de solides cartons.
- Les matériaux utilisés sont classés M1. Degré de protection: IP4X.
- En bref... un système aux finitions particulièrement soignées, dont les parois et les couvercles sont revêtus d'une pellicule de protection, économique, fin (seulement 4 moulures), solide, complet quant à sa gamme d'accessoires et... Rapide quant au montage (clipsage).

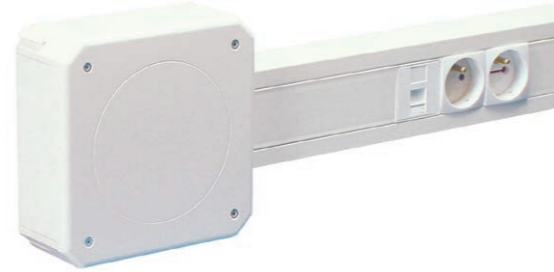


LDSD + SYS 751

Scatola di derivazione mm 165x165.
Sys 751 canale portautenze a 1 scomparto mm 75x50x1
Sezione utile 2255 mm²

Junction Box mm 165x165.
Sys 751 socket-point raceway 1 compartment mm 75x50x1
Application section 2255 mm²

Boîte de dérivation mm 165x165.
Sys 751 goulotte appareillable a 1 compartiment mm 75x50x1
Section utile 2255 mm²

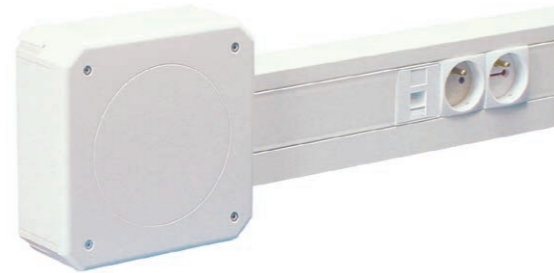


LDSD + SYS 1051

Scatola di derivazione mm 165x165.
Sys 1051 canale portautenze a 1 scomparto mm 100x50x1
Sezione utile 3150 mm²

Junction Box mm 165x165.
Sys 1051 socket-point raceway 1 compartment mm 100x50x1
Application section 3150 mm²

Boîte de dérivation mm 165x165.
Sys 1051 goulotte appareillable a 1 compartiment mm 100x50x1
Section utile 3150 mm²



LDSD + SYS 1252

Scatola di derivazione mm 165x165.
Sys 1252 canale portautenze a 2 scomparti mm 125x50x2
Sezione utile 2310 mm²

Junction Box mm 165x165.
Sys 1252 Socket-point raceway 2 compartments mm 125x50x2
Application section 2310 mm²

Boîte de dérivation mm 165x165.
Sys 1252 goulotte appareillable a 2 compartiments mm 125x50x2
Section utile 2310 mm²



LDSD + SYS 1603

Scatola di derivazione mm 165x165.
Sys 1603 canale portautenze a 3 scomparti mm 160x50x3
Sezione utile 2050 mm² (1-3) - 2070 mm² (2)

Junction Box mm 165x165.
Sys 1603 socket-point raceway 3 compartments mm 160x50x3
Application section 2050 mm² (1-3) - 2070 mm² (2)

Boîte de dérivation mm 165x165.
Sys 1603 goulotte appareillable a 3 compartiments mm 160x50x3
Section utile 2050 mm² (1-3) - 2070 mm² (2)

