



UPTEC
JUST TECHNOLOGY

DÉSIGNATION

**UPTEC V2 - COFFRET 10" 6U PROF 300MM
AVEC PANNEAUX AMOVIBLES**

RÉFÉRENCE

8062600



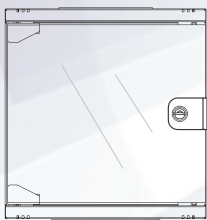
CARACTÉRISTIQUES TECHNIQUES

Coffret 10"

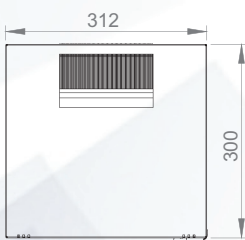
Unité	6U
Largeur	312 mm
Profondeur	300 mm
Dimensions (L x P x H)	312 x 300 x 330 mm
Capacité de chargement	20 kg
Couleur	Noir, RAL 9005



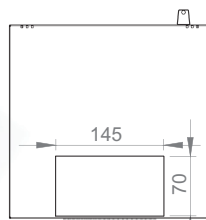
DESSIN TECHNIQUE



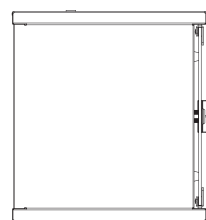
Vue de face



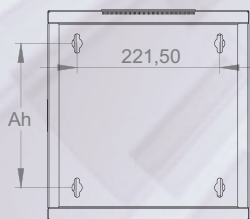
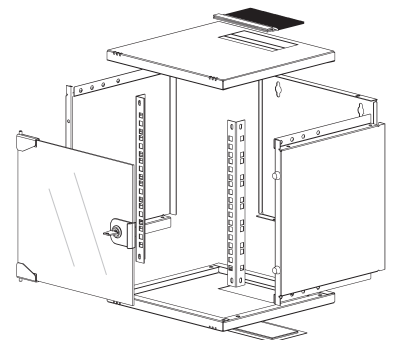
Vue du dessus



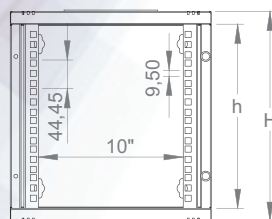
Vue du dessous



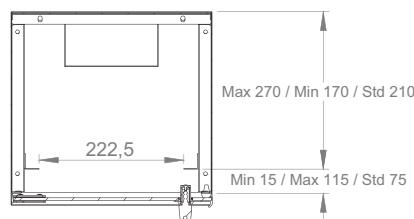
Vue de côté



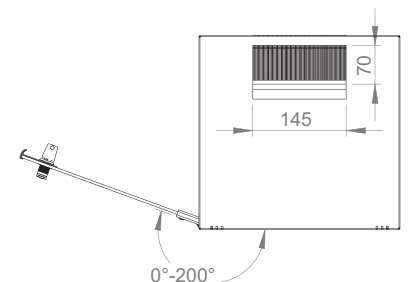
Vue arrière



Dimensions
Largeur - Hauteur



Distances (max/min)
Installation



Porte avant
Angle d'ouverture

	Ah	H	h
6U	223	330	267
9U	357	464	400